

# MAPCOM

# COMPANY PROFILE 2025

PRECISION IN EVERY DIMENSION.

## Engineering, GIS & Environmental Solutions

Utilizing advanced spatial analytics for optimized decision-making.



R2-186 New Azadi,  
Bahirka Road, Erbil,  
Iraq.



[www.mapcom.org](http://www.mapcom.org)



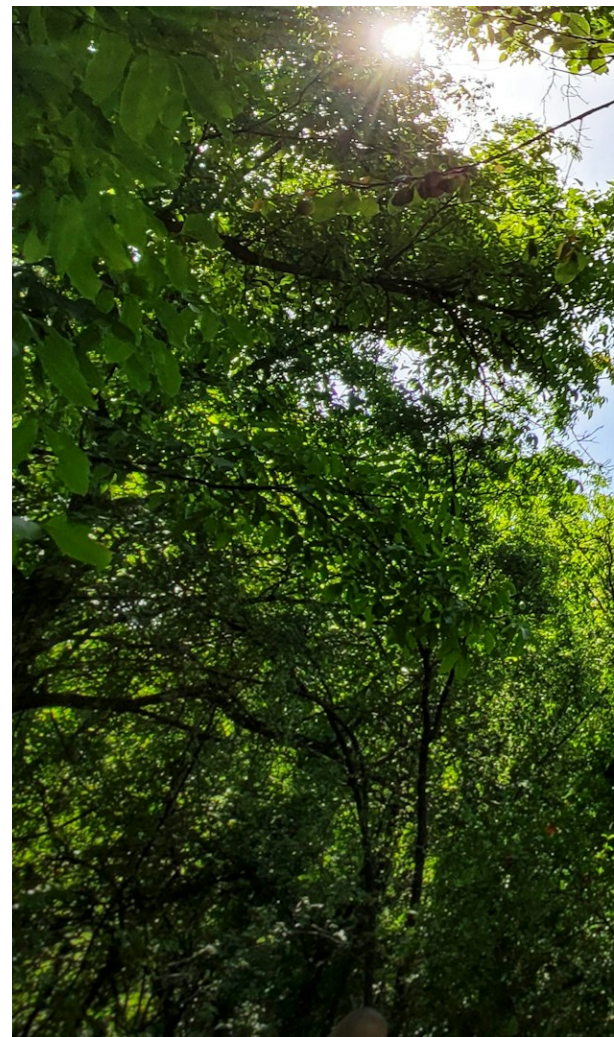
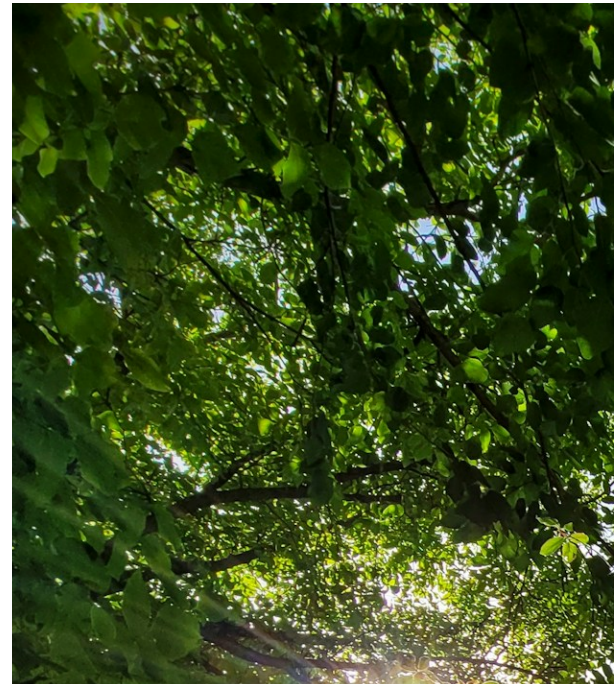
[cs@mapcom.org](mailto:cs@mapcom.org)

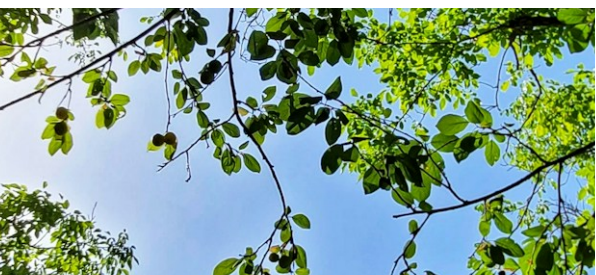
# WELCOME

Lets us help  
makes your ideas  
become true.

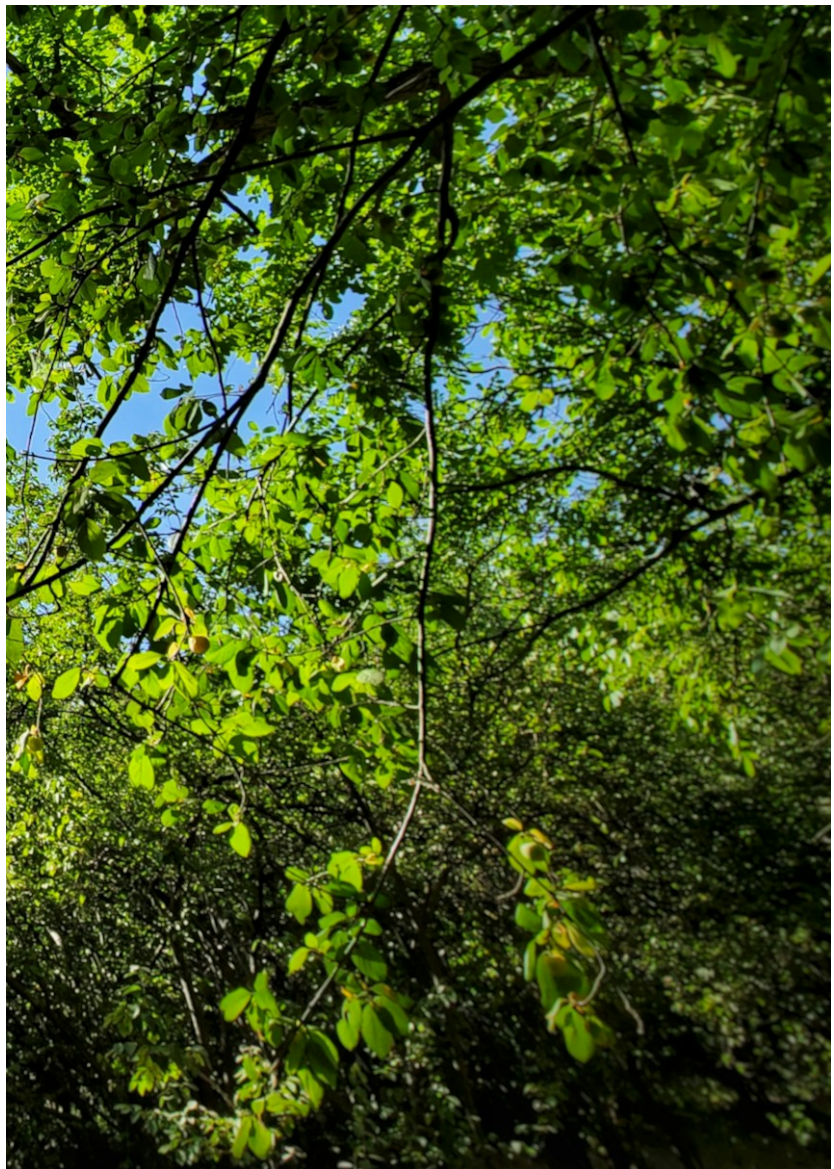
## WHOWEARE?

MapCom founded in 2006 in the vibrant Kurdistan Region of Northern Iraq, MapCom stands as a distinguished local entity dedicated to delivering a comprehensive suite of engineering services. Specializing in environmental consultancy, topographic land surveying and designing, GIS and mapping solutions, providing a diverse selection of top-tier geospatial and surveying instruments, meticulously curated to elevate the precision and accuracy of your survey projects to unparalleled levels." as well as cutting-edge laboratory services for scientific tests and sampling analysis, MapCom exemplifies excellence and expertise in every project undertaken.





At MapCom, our team of proven professionals embodies a culture of integrity and diligence, epitomizing trustworthiness and unwavering dedication to client success. Registered with the Kurdistan Regional Government (KRG) and the Ministry of Natural Resources (MNR) for environmental and topographic land survey consultancy, MapCom sets the benchmark for industry standards and regulatory compliance.



With a relentless commitment to quality and a track record of delivering results, MapCom is the partner of choice for those seeking innovative engineering solutions tailored to meet the unique challenges of the region. Experience the difference with MapCom, where precision meets passion and excellence is our hallmark.

## MEET OUR TEAM



Hiwa AZEEZ

Company Owner and General Manager

Mr. Hewa is the primary point of contact for all projects and has more than 16 years of managing local teams and coordinating local resources for numerous projects locally in Kurdistan. Mr. Hewa is an experienced and effective manager with strong problem-solving skills and with a focus on providing solutions to challenges. He provided senior project oversight and expert managerial input on complex projects with time effective deadlines.



Abdulmajeed HUSSEIN

Company Owner and Survey Section Manager

Mr. Abdulmajeed, our esteemed company owner, serves as the cornerstone for all survey projects, bringing over 30 years of unparalleled expertise in topographic surveying within the region. His profound experience is the driving force behind the exponential growth of our survey section, positioning it on the trajectory to becoming the foremost provider of survey products for local surveyors and their projects. With a vast network of local survey professionals, Mr. Abdulmajeed fosters robust relationships and stands as the go-to figure for tackling even the most challenging survey tasks.



Senior Consultant  
ESIA writer / Reviewer  
Dr. Virginia TICE



GIS Specialist  
Alan KARIM



Operations Officer  
Zana Mamundy



Environmental Specialist  
Dr. Siraj GORAN



Senior Data Analyst  
Drone Specialist  
Zanyar BAZYAR



Surveyor and  
Calibration Specialist  
Yusuf NAQEEB



Socio-Economy Expert  
Dr. Jamal KAMAL



Environmental Specialist  
Ahmed BAGZADAH

# SERVICES

## ENVIRONMENTAL SERVICES

MapCom environmental team has extensive experience in providing a range of environmental services to both Kurdistan Region Government and private clients in the region. Our experienced and qualified project team has involved in several environmental services related projects across the region in the following environmental discipline.



---

### ENVIRONMENTAL IMPACT ASSESSMENT

#### EIA

The assessment of the environmental consequences of a plan, policy, program, or actual projects prior to the decision to move forward with the proposed action.

---

### ENVIRONMENTAL, SOCIAL, AND HEALTH IMPACT ASSESSMENT

#### ESHIA

The assessment of the environmental consequences of a plan, policy, program, or actual projects prior to the decision to move forward with the proposed action.





## SOCIO-ECONOMIC ENVIRONMENT

The social science that studies how economic activity affects and is shaped by social processes. In general, it analyzes how societies progress, stagnate, or regress because of their local or regional economy, or the global economy.



## ENVIRONMENTAL BASELINE STUDY EBS

An Environmental Baseline Study (EBS) is an intrusive soil and groundwater investigation conducted to establish the baseline level of potential contaminants in.

## ENVIRONMENTAL MANAGEMENT PROGRAM EMP

is a site specific plan developed to ensure that the project is implemented in an environmentally sustainable manner and understand the potential environmental risks arising from the proposed project and take appropriate actions to minimize those risks.



## ENVIRONMENTAL MONITORING AND MANAGEMENT PROGRAMME EMMP

Tool to proactively manage and confirm that impacts of dredging, reclamation and other construction activities do not exceed the stipulated Environmental Quality Objectives (EQOs) for the project.

## ENVIRONMENTAL IMPACT REPORT EIR

It identifies and examines the likely environmental effects of the continuing operations of an existing facility or those of a proposed project, and proposes measures to avoid, mitigate, or offset them. An EIR is only a part of EIA process and not its definitive product.

# RESPONSIBILITY

To support development activities in Kurdistan, MapCom has developed a strong local and international scientific team with working knowledge of local regulatory requirements, customs, and operational needs. Combining local and international team contingent is then closely supported by our network of internationally recognized technical experts with considerable experience in the region. This team is comprised of cultural analysts, geologists, biologists, archaeologists, and regulatory analysts and is in place with roles and responsibilities clearly defined.



# QUALITY

MapCom team has extensive experience and a proven track record supporting multiple petroleum operators in the Kurdistan Region. We have a strong understanding of contractual obligations contained in Production Sharing Contracts (PSCs) and Kurdistan Regional Government (KRG) Ministry of Natural Resources (MNR) requirements and expectations required to be successful.

Our team structure combines local management, expertise, knowledge, and resources with international expertise, Quality Management/Quality Assurance, and international best practices. This unique approach provides our clients with assurance that regulatory compliance and international best practices are incorporated through the process providing strong quality and compliant results.

## SURVEY AND DESIGN

We have three experienced and well-trained survey teams consist of all specialties necessary for surveying and designing.

- Survey Consultants
- Survey Engineers
- Draftsman & Designer
- GIS Specialists
- Surveyors
- Technicians
- Labors

## CAPABILITY

Survey Department owning modern and advanced survey equipment, also using latest versions of designing software, Surveying (ground control and utility surveys) has been an integral part of MapCom service team since the company was formed in 2006. The survey services that MapCom provides encompass all aspects of the survey profession., the general characteristics for survey works and any other specific survey works may the client require. MapCom company surveying services is consist of:

## TERRESTRIAL SURVEYING

A terrestrial survey involves measuring and mapping the physical features of the Earth's surface. This process is essential in various fields such as civil engineering, construction, land development, and environmental studies. MapCom company steps involved in a terrestrial survey:

### ***Micro geodesy***

also known as high-precision geodesy or engineering geodesy, involves the precise measurement and monitoring of small-scale deformations in structures, land surfaces, and other objects. This field is critical in ensuring the stability and integrity of engineering projects, natural features, and urban infrastructure.

# 2





## Topographic survey

Our survey team will provide variety topographic survey which fulfill our client's needs. Below are the general characteristics for survey works which MapCom can provide but not limited:

1. Precise and High Accuracy Topographic (Land) Survey
2. Access Road Survey & Designing Well Site & Camp Site Survey & Designing
3. Installing Ground Control Points & Bench Marks
4. Survey and Designing of Oil and Gas pipeline Route/alignment
5. Calculation of earth works, bill of quantities
6. Desktop Survey Study, using 3D Models, based on DEM laid on High Res Sat-Image
7. Survey QA/QC
8. Mapping & Engineering
9. Third Party Topographic Survey Consultation, Supervision and Checking
10. High precision and RTK/GPS services
11. Ground control surveys for photogram metric projects,
12. Differential GPS (DGPS).
13. Boundary and cadastral surveys.
14. Total station topographic surveys.
15. Surveys under hazardous environmental conditions.
16. Monitoring projects for structural movement.
17. Construction and cross-section surveys (from road design to precision layout and quality control

## Asbuilt survey

Our An as-built survey is a detailed and accurate representation of a construction project as it has been completed. This type of survey captures the exact locations, dimensions, and elevations of all the elements within a project after construction, ensuring that they match the design plans and documenting any deviations. As-built surveys are crucial for verifying the accuracy of construction work, facilitating maintenance, and providing a reference for future modifications or expansions.



## INTERNATIONAL LABORATORIES

### Construction Surveying

Construction surveying, also known as building surveying, involves the process of determining precise locations, distances, and angles on a construction site. This is crucial for ensuring that structures are built accurately according to design plans.

#### *Phases of Construction Surveying*

##### *A. Pre-Construction Survey:*

*Initial surveys to gather data on the site's current conditions.*

*Includes topographic surveys and boundary surveys.*

##### *B. Construction Phase Survey:*

*Ongoing surveys to ensure accurate placement of structures.*

*Includes layout and stake-out surveys.*

##### *C. Post-Construction Survey:*

*Final surveys to verify that construction matches the design plans.*

*Includes as-built surveys and documentation.*

#### Importance

##### *Accuracy and Precision:*

*Ensures structures are built correctly and safely.*

*Minimizes errors and rework.*

##### *Cost Efficiency:*

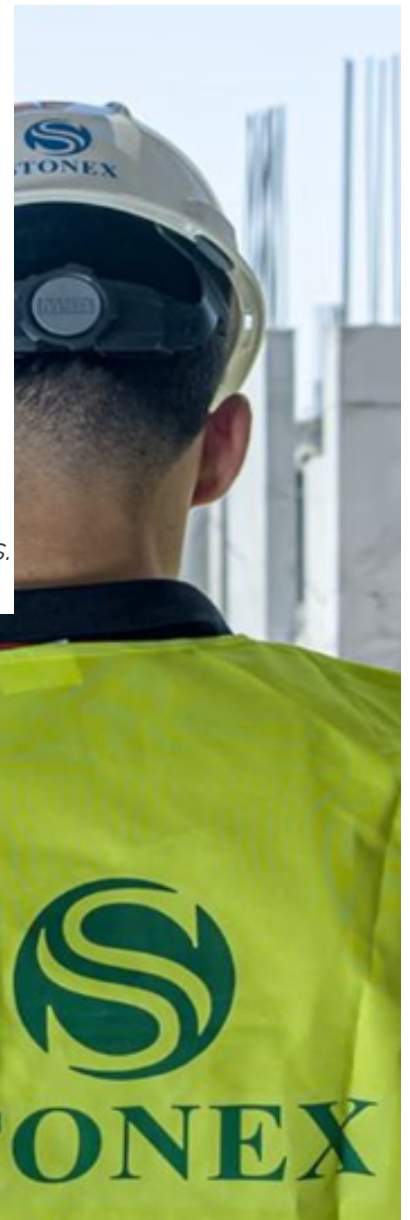
*Reduces waste and inefficiencies in the construction process.*

*Helps in staying within budget by avoiding costly mistakes.*

##### *Legal Compliance:*

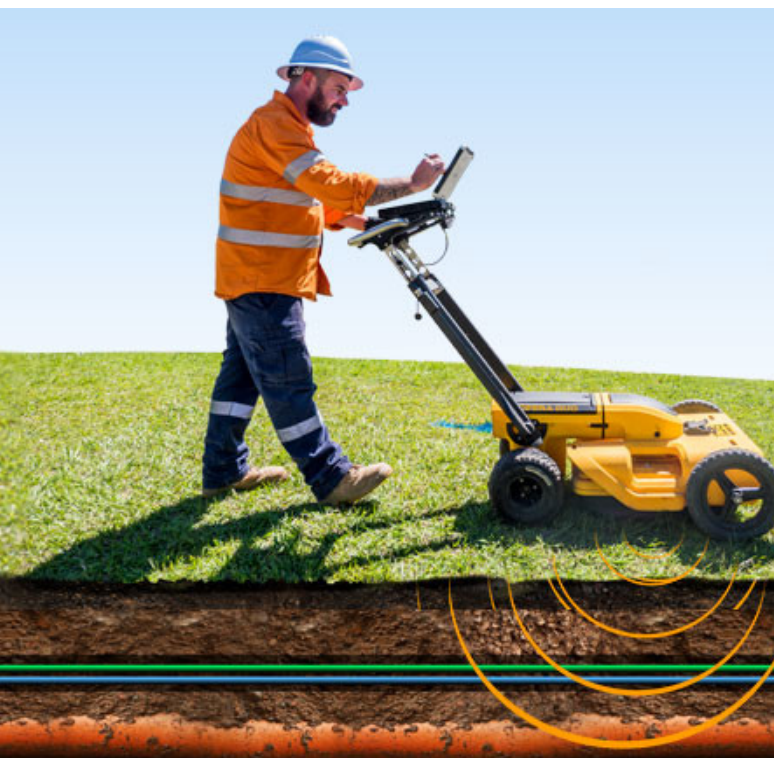
*Ensures construction adheres to legal boundaries and regulations.*

*Prevents potential legal disputes over property lines.*



## Laser Scanning

Laser scanning, also known as LiDAR (Light Detection and Ranging), is a remote sensing technology that uses laser light to measure distances and create high-resolution, three-dimensional models of the surveyed area. This technique is widely used in various fields, including civil engineering, archaeology, environmental science, and urban planning. Thousands to millions of points (point clouds) are collected per second. Each point in the cloud has x, y, z coordinates, representing the 3D position of the surface feature.



## Sub Surface Surveying

Subsurface surveying, also known as subsurface exploration or geophysical surveying, involves investigating and mapping features beneath the Earth's surface. This type of surveying is essential in various fields, including geology, engineering, environmental studies, and archaeology. Subsurface surveys provide critical information about soil composition, rock formations, groundwater, and buried structures.

## Hydrography Surveying

Hydrography involves the measurement and description of the physical features of oceans, seas, rivers, and lakes, and the prediction of their change over time. It plays a crucial role in navigation, coastal management, marine construction, environmental protection, and resource exploration.

Benefits:

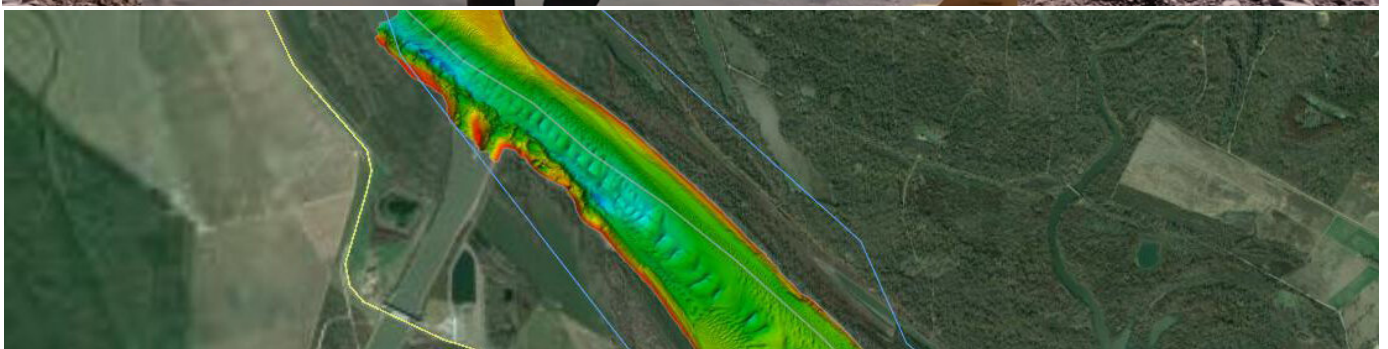
1. Enhanced Safety: Improves navigation safety and reduces the risk of maritime accidents.
2. Informed Decision-Making: Provides critical information for coastal development, environmental protection, and resource management.
3. Scientific Advancement: Contributes to our understanding of marine and coastal environments.

MapCom will provide latest hydrography solutions which is Stonex Nemo110 USV, which can be used for:

survey of shallow waters

underwater pipe detection

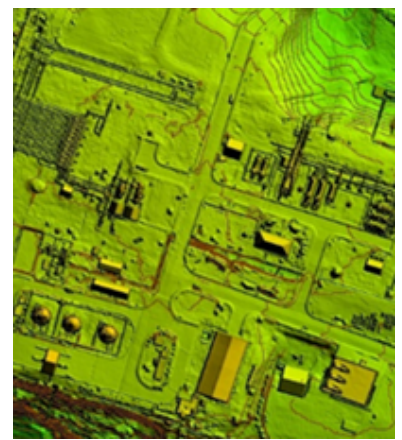
underwater topographic survey and Mapping



## Photogrammetry Survey

Mapcom company is a leading company in the field of photogrammetry. We use the latest hardware and software technologies to carry out photogrammetry tasks. Our expert team is composed of experienced and specialized professionals who continuously update their knowledge and skills. Our main goal is to enhance the quality level in performing photogrammetry projects. By leveraging advanced equipment and modern algorithms, we strive to provide our customers with quality and precise services. Customer trust and satisfaction with the results of our work are important to us, and we are committed to continuous improvement in our performance and services.

Mapcom company is the first company in the field of drone-based mapping training courses in the Kurdistan region, providing services for the post-processing of aerial mapping data.



## DRONE PROJECTS

NO.	PROJECT NAME	AREA
1	TAKE THE ORTHO PHOTO AND CONTOUR LINE FOR THE ZEREN CITY IN ERBIL	670 DONUM
2	CREATING ORTHO PHOTO AND 3D MODELING SIMULATION FOR KAR GROUP IN ERBIL	435 DONUM
3	TAKE VIDEOS AND PICTURE FOR THE DNO WORK SITE IN ZAKHO BLOCK.	320 DONUM
4	CREATING ORTHO PHOTO AND TERRAIN MODEL FOR EXISTING GROUND SIMULATION (CONTOUR LINE GENERATING) ADALLA CITY IN TKREET	450 DONUM
5	CREATING OF PHOTOGRAMMETRY KAR GAS PROCESSING CENTER	200 DONUM
6	TAKE PHOTOGRAMMETRY PHOTO FOR BARZAN QUARTER IN SORAN CITY	200 DONUM

## Photogrammetry Survey

Photogrammetry is the science of making measurements from photographs, especially for recovering the exact positions of surface points. It involves using photographic images to create maps, drawings, or 3D models of real-world objects or scenes. Photogrammetry is widely used in fields such as topographic mapping, architecture, engineering, and environmental studies.

Photogrammetry offers numerous benefits across various industries and applications due to its ability to create accurate and detailed 3D models from photographs. Here are some of the key benefits of Photogrammetry:

1. High Accuracy and Detail
2. Cost-Effective:
3. Versatility:
4. Non-Invasive:
5. Efficiency and Speed:
6. Rich Data Output:
7. Flexibility:



DTM



Slope



DSM



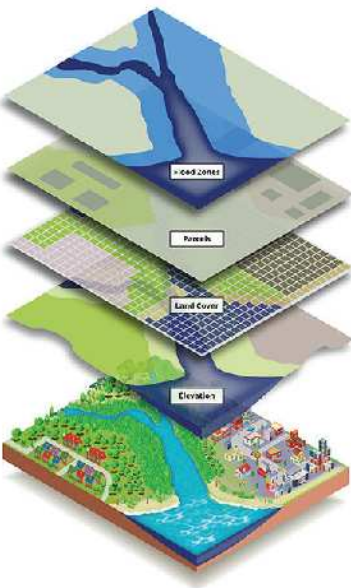
TOPOG.



## GIS & MAPPING

MapCom is aware of progress client's ability to make statistic-constructed decisions. With many years' experience in the GIS field, MapCom is capable of providing standard and up to date applications in both local and international firms in the Kurdistan Regional Of Iraq.

Our GIS team having a many years of experience and qualified, participated in ESRI training courses and have international certifications.



### SOFTWARE:

We use the following soft wares (Arc GIS, Map Info, ENVI, Surfer ... etc.)

### DATA

- We have a huge archive in both raster and vector data for whole Iraq (Satellite Imagery, Topographic maps, Geological maps, Base maps, DEM...etc.)
- Various layers (Road Networks, Rivers, Lakes, Governorate centers, City Center, Villages, Boundaries, etc.)

## ACTIVITIES & PROJECTS

- Detailed base map for Iraq and Kurdistan Region.
- Exploration licenses and oil fields map for Kurdistan Region.
- Guide maps for (Erbil, Duhok, Sulaiymanyah and Kirkuk) cities.
- Land use maps (Desktop Study) for several of Kurdistan Oil Blocks, (Digitizing and Analyzing High Res Satellite Image).
- Designing and Printing, Various types of maps according to client's demand.
- Provision of Satellite Image, DEM, Digital GIS data.



## LABORATORIES

MapCom Company owns a Laboratory equipped with high quality precise and modern devices, all are from most internationally known brands which all are certified that their results are accurate, our lab equipment are periodically maintained and calibrated, also MapCom owns weather stations for monitoring, measuring and recording most of weather climate parameters. MapCom Lab capable of testing and analyzing most of environmental receptors such as and not limited;



## INTERNATIONAL LABORATERIES

MapCom will utilize an international laboratory with required certifications and accreditations to perform required sample analyses. Our team has developed and will utilized a sampling strategy and approach which has been proven successful in satisfying MNR, PSC needs and has also provided sufficient coverage and understanding to document baseline conditions under other EIAs completed by the MapCom Team.

## LABORATORIES QUALITY



### WATER QUALITY

We are analyzing water samples for physical, chemical, and biological parameters, we are able to analyze water samples for more than 21 parameters, some of them can be analyzed directly in the field using our mobile lab, and other parameters in our main lab



### SOIL QUALITY

In our main Lab we are analyzing soil samples for more than 14 parameters, some of them can be analyzed.



### AMBIENT AIR QUALITY

In our Lab. we are analyzing gaseous pollutants for more than 15 parameters, some of them can be analyzed directly in the field using our mobile lab, and other parameters in our main lab.



### NOISE QUALITY

In field Noise measurement using Noise Level Metre (Integrating and Logging Sound Level Meter).



# PROJECTS

## ENVIRONMENTAL PROJECTS

MapCom team has extensive experience and a proven track record supporting multiple petroleum operators in the Kurdistan Region.

To support development activities in Kurdistan, MapCom has developed a strong local and international scientific team with working knowledge of local regulatory requirements, customs, and operational needs. Combining local and international team contingent is then closely



supported by our network of internationally recognized technical experts with considerable experience in the region. This team is comprised of cultural analysts, geologists, biologists, archaeologists, and regulatory analysts and is in place with roles and responsibilities clearly defined.



## TOP SEVEN ENVIRONMENTAL PROJECTS

NO.	DATE	CLIENT	PROJECT NAME	BLOCK/LOCATION
1	Sep. 2013	ESBS & ESIA FOR 2D SEISMIC SURVEY BARANAN EPLORATION BLOCK	TOTAL E&P KURDISTAN	SULAIMANY
2	Apr. 2013	EIA FOR BAESHIQA BLOCK "PSC" DRILLING AND WELL TESTING OPERATIONS	EXXONMOBILE	DUHOK
3	Sep. 2017	DNO	EIA-HAWLER <sup>1</sup> - WELL SITE TRACK & ERBIL 2 WELL INTERVENTION OPERATION ERBIL PSC	BENANAN-ERBIL
4	Jun. 2017	QAIWAN GROUP	ESIA- NG BRANCH PIPELINE KOR MOR TO BAZIAN POWER PLANT	SULYAMINIAH
5	Jul. 2016	ORYX PETROLIUM	MASTER ESHIA – HAWLER BLOCK	ERBIL
6	Sep. 2014	GULF KEYSTONE PETROLEUM LTD	ESIA SHAIKHAN <sup>10</sup> -F(SH11-)	DUHOK
7	Jul. 2013	OIL SEARCH	EIR STUDIES FOR BLOCK K41	SULAIMANY

# PHOTO GALLERY



## TOPOGRAPHIC & LAND SURVEY DESIGN

MapCom team has extensive experience and a proven track record supporting multiple petroleum operators in the Kurdistan Region.

Survey Department owning modern and advanced survey equipment, also using latest versions of designing software, Surveying (ground control and utility surveys) has been an integral part of MapCom service team since the company was formed in 2006. The survey services that MapCom provides encompass all aspects of the survey profession., the general characteristics for survey works and any other specific survey works may the client require.

MapCom have extensive experience working in Kurdistan and Iraq for Local and multinational Oil & Gas companies. MapCom more recently undertaken the following similar activities, all has been performed in typical time and been approved by the clients.

# 2



## TOP SIX TOPOGRAPHIC AND LAND SURVEY DESIGN PROJECTS

NO.	DATE	CLIENT	PROJECT NAME	BLOCK/LOCATION
1	2013 Current	EXXONMOBIL	LAND SURVEY AND DESIGN OF CONSTRUCTION ROAD & OIL WELL PAD AND CAMP OF ALL EXXONMOBIL BLOCKS: BAASHIQA, ALOUSH, PIRMAM, QARAHANJER & BETWATA BLOCKS	KRG-ERBIL, DUHOK, KERKUK & SULIMANIAH
2	2015 Current	DNO	LAND SURVEY AND PRE SURVEY OF ALL BLOCK IN TAWKE ,BANINAN & BASTORA, WITH CALCULATE AREA OF LAND, OWNERSHIP OF THE ALL LAND USED BY DNO	KRG-ERBIL & DUHOK
3	2010 Current	KAR GROUP	SURVEY AND DESIGN OF 185 KM LENGTH MAIN KURDISTAN PIPE LINE TO CONNECTING CPS KHURMALA OIL FIELD TO FISHKABUR DUHOK	KRG-ERBIL & DUHOK
4	2015	ELSEWEDY CABLES CO.	LAND SURVEY OF 5 DIFFERENT LOCATIONS IN KURDISTAN/IRAQ FOR CONSTRUCTION OF CABLE LINE OF POWER SUB-STATIONS 33KV & 132KV. IN ERBIL AIRPORT, MAJIDI MALL, GRD JUTEAR, DUHOK & AKRA	KRG-ERBIL & DUHOK
5	2015-2014	ZOZIK CO.	TOPOGRAPHIC SURVEY SERVICES FOR ACCESS ROAD, WELL PAD AND CAMP SITES & SURVEY NEW WATER PIPE LINE BM IN HALABJA AND SULIMANIAH	SULAIMANY
6	2015-2014	NTI. USA	LAND SURVEY IN TAWKE BLOCK NEW OPF CAMPS AND ROADS ALSO SURVEY NEW CAMP SYRIAN DEPORTEES IN DOMIZ CAMP	KRG-ERBIL & DUHOK

## PROJECT FIELD GALLERY

### **ASER** Scanning



## PROJECT FIELD GALLERY



## COMPLETED PROJECTS



**+361**  
ENVIRONMENTAL STUDY



**+674**  
TOPOGRAPHIC SURVEY



**+1368**  
GIS PRODUCTS



MapCom is authorized dealer of Italian Stonex brand in Iraq for Survey products such as GNSS, Total Stations, Laser Scanning and other survey needs.

MapCom has installed and activated of CORS Stations from Stonex in governorates of Erbil, Basrah and Baghdad successfully.

Therefore, you can contact us to connect your devices to the station and take advantage of this service to Facilitate your work and obtain the highest accuracy of data reading for topographic survey work.



## MAPCOM SERVICE CENTER

At our service center, we take great pride in offering comprehensive maintenance and after-sales support for both the software and hardware aspects of survey instruments. Our team of highly skilled technicians and experts is dedicated to ensuring your instruments remain in optimal working condition at all times.

### Maintenance and After-Sale Services

Our service center offers comprehensive maintenance and after-sale services for a wide range of survey instruments. Whether it's troubleshooting software issues or repairing hardware components, we have the expertise to handle it all. We understand the critical nature of these instruments in your work, and we strive to provide quick and efficient solutions to minimize downtime.

### Calibration Service

One of our key offerings at the service center is our calibration service, which is unrivaled in terms of quality and precision. We understand the importance of accurate measurements in surveying applications, and our calibration services are designed to ensure that your instruments are always operating at the highest level of accuracy.

MapCom, utilizing the latest collimator and adjusting software for calibrating optical surveying equipment, such as Total Stations, Theodolites and dumpy levels using well trained staff and high accuracy adjustment software, declares its readiness to provide services to all construction companies in Iraq.



## Original and Genuine Spare Parts

At our service center, we understand the importance of using original and genuine spare parts when it comes to repairing and maintaining survey instruments. We prioritize the authenticity and quality of the parts we use to ensure the optimal performance and longevity of your instruments.

Our commitment to using original spare parts means that you can have peace of mind knowing that your instruments are being serviced with components that meet the manufacturer's specifications. This not only helps in maintaining the integrity of your instruments but also ensures their reliability and accuracy over time.

Whether you need replacement components for software or hardware, you can trust us to provide you with authentic spare parts that are designed to work seamlessly with your instruments. Our focus on quality and reliability extends to the parts we use, guaranteeing that your instruments are in the best possible hands when they are serviced at our center.

## Quality Assurance

Quality is at the heart of everything we do at our service center. We adhere to the highest standards of service delivery and customer satisfaction. Our team undergoes regular training to stay updated on the latest technologies and best practices in the industry, ensuring that we can provide you with top-notch service every time.

## Customer Satisfaction

Customer satisfaction is our top priority, and we go above and beyond to meet and exceed your expectations. From timely responses to inquiries to transparent communication throughout the service process, we aim to make your experience with our service center as smooth and hassle-free as possible.

When you trust us with your survey instruments, you can rest assured that they are in capable hands. Our service center is your one-stop destination for all your maintenance, after-sale, and calibration needs.



# CLIENTS



ExxonMobil



## CONTACT

Villa # R186-2

Atconz (New Azadi) City

120m Bahirka Road, Erbil-Iraq

+964 750 429 0707

[cs@mapcom.org](mailto:cs@mapcom.org)